

SAVAKI : Nihavend

USULÜ : D ü y e k

GÜLTE ve BESTE : Sabahaddin Vollen

KODASI :

60



ŞARKI :

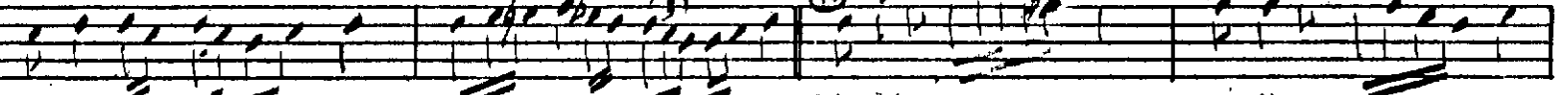


Ge-li-n-ce sen gö-nü-l ba-ğ-ı çi-çe-k-le-nir ba-ha-r o-lur

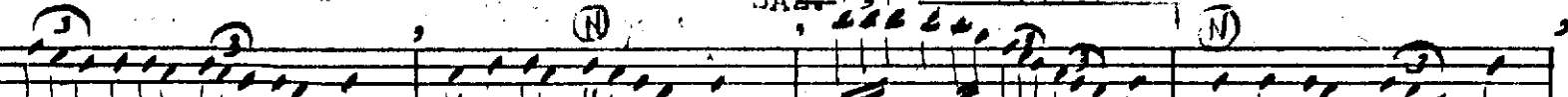


Ge-li-n-ce sen gö-nü-l ba-ğ-ı çi-çe-k-le-nir

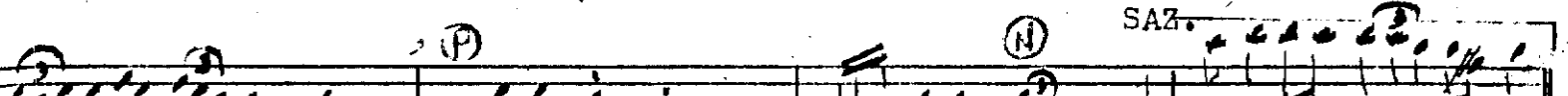
SAZ. NAKARAT



ba-ha-r o-lur Gi-di-n-ce-sen gö-nü-l su-sar



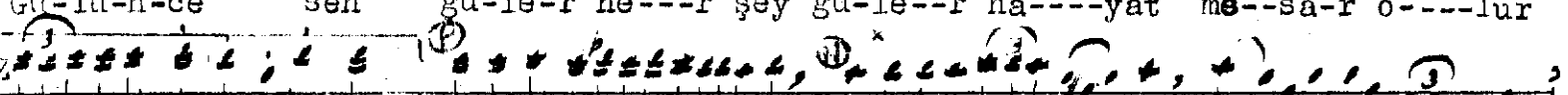
kuş-la-rö-t-mez ha-za-n o-lur Gi-di-n-ce sen



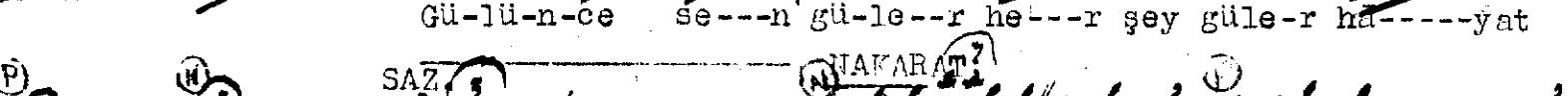
gö-nü-l su-sar kuş-la-r ö-t-mez ha-za-n o-lur



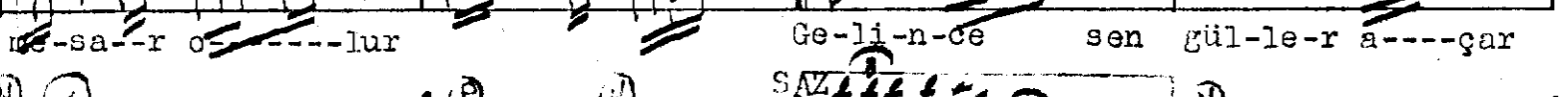
Gü-lü-n-ce sen gü-le-r he-r şey gü-le-r hā-yat me-sa-r o-lur



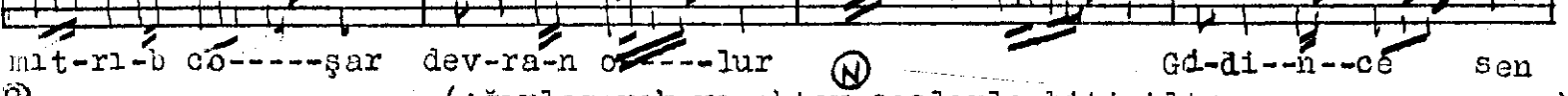
Gü-lü-n-ce se-n gü-le-r he-r şey gü-le-r hā-yat



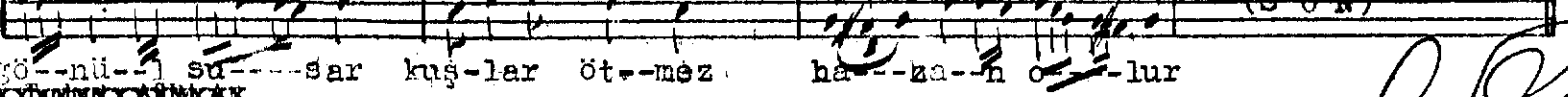
me-sa-r o-lur Ge-li-n-ce sen gül-le-r a-çar



mit-ri-b co-şar dev-ra-n o-lur Gi-di-n-ce sen



(Ağırlaşarak ve oktav seslerle bitirilir)



gö-nü-l su-sar kuş-lar ö-t-mez ha-za-n o-lur

S. Polhan